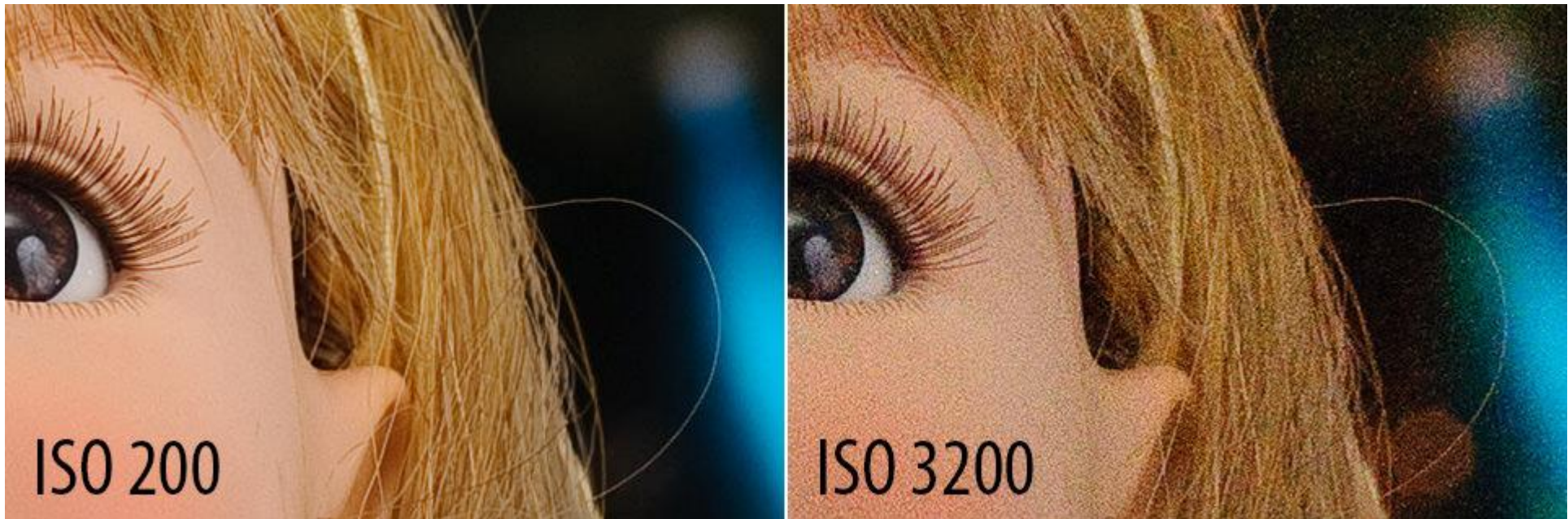


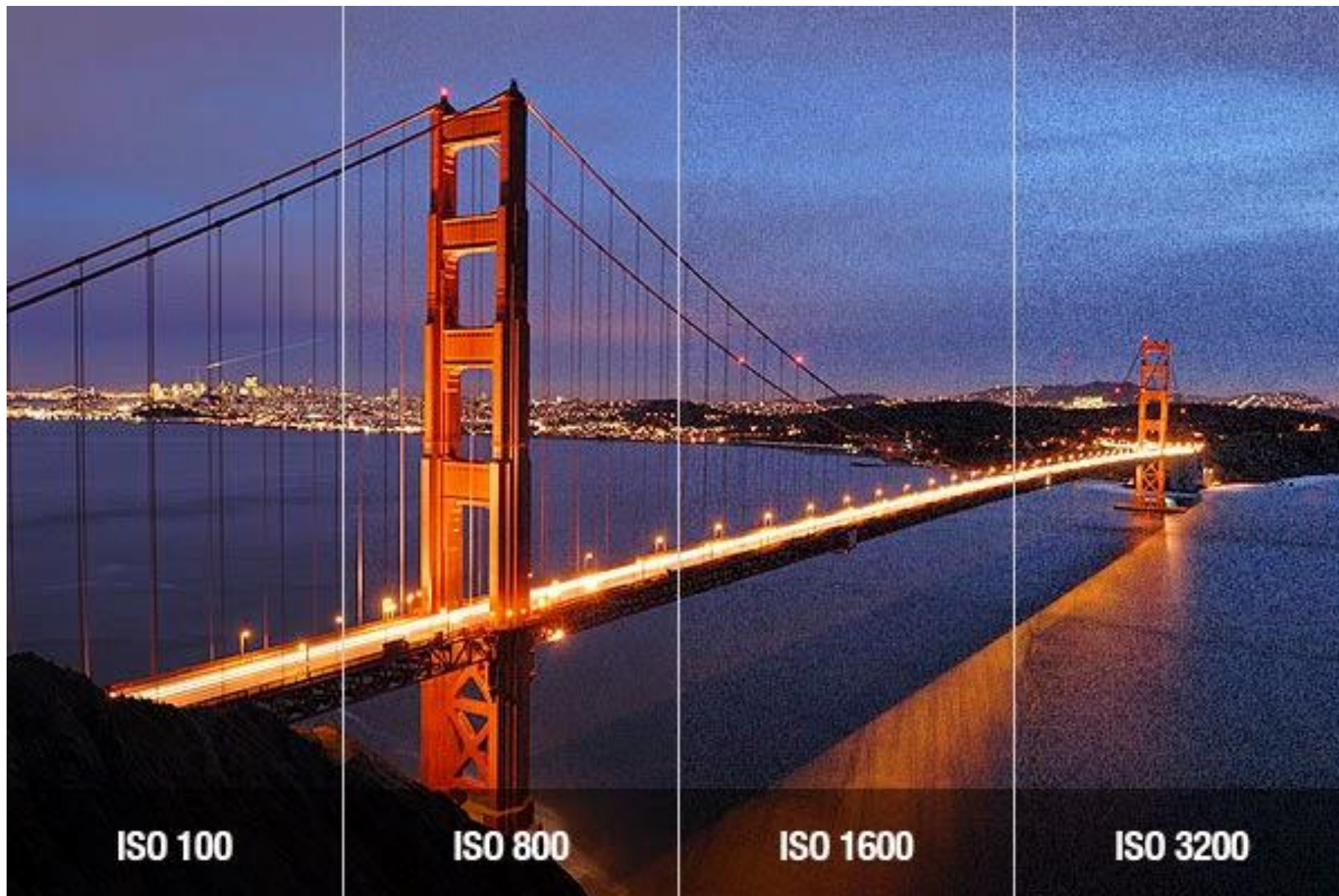


What is ISO?

- A measurement of how sensitive the camera sensor is to light.
- Most of the cameras have Base ISO number of 100.
- And then it goes in sequence of geometric progression – 100, 200, 400, 800, 1600, 3200, etc.
- So each time you level up the number, the sensitivity doubles on the sensor.

- ISO parameter is the only parameter in the triangle of exposure that doesn't have mechanical nature.
- Instead it is controlled electronically and is related to changing the level of sensitivity of the sensor in the camera.
- Boost the ISO when there is not enough light to capture to get a bright enough photo.
- Increasing ISO will always create "noise".





ISO 100

ISO 800

ISO 1600

ISO 3200

When choosing the ISO setting ask yourself the following four questions?

1. Light - Is the subject well lit?
2. Grain - Do I want a grainy shot or one without noise?
3. Tripod - Am I using a tripod?
4. Moving Subject - Is my subject moving or stationary?

https://www.youtube.com/watch?v=q8cj9Lj9w-g&feature=emb_logo